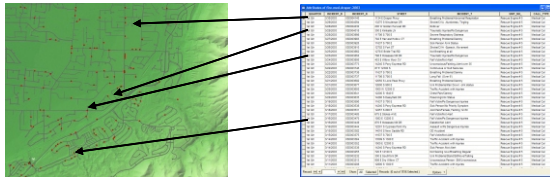


What is GIS?

GIS (Geographic Information System) is a system of computer software, hardware, data and personnel working together to manipulate, analyze, and present information that is tied to a geographic location.



GIS provides more intelligent maps that are based on geographic data that has one of more associated databases.



Map with EMS calls as points

Tabular data associated with the points

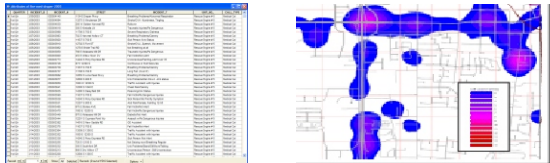


Table taken from a database such as firehouse with EMS call information

Map with calls as points and density

Difficult to interpret

Easy to interpret

A picture is worth a thousand words!



11989 SOUTH HIDDEN VALLEY ROAD
SANDY UTAH 84092.5908

Innovative
GIS Solutions
for
Municipal Government
using the
GeoCity
model



11989 SOUTH HIDDEN VALLEY ROAD
SANDY UTAH 84092.5908

801.553.6421 | MOBILE 801.809.1083
PETE@SHABESTARI.COM

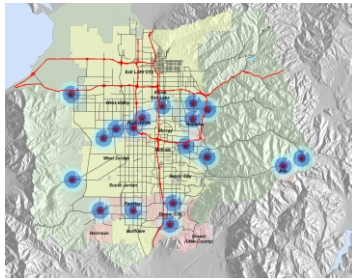
Why Use GIS?

Improve Organizational Integration



One of the main benefits of GIS is improved management of your organization and resources. A GIS can link data sets together by common-location data, such as addresses, which helps departments share their data. By creating a shared database, one department can benefit from the work of another, with data being collected once and used many times.

Make Better Decisions

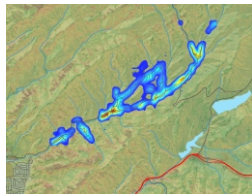


Fire station coverage area for response analysis

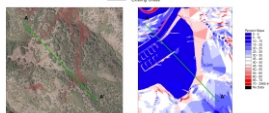
The old adage 'better information leads to better decisions' is true for GIS. A GIS is not just an automated decision-making system but a tool to query, analyze, and map data in support of the decision-making process.

Make Maps

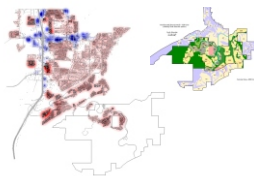
For simplicity's sake, we often call GIS 'Mapping Software'. We most often associate maps with physical geography, but GIS is flexible enough to map any kind of data you wish.



Mapping of population density, slope and vegetation



Mapping of impacts from potential new development



Mapping of commercial and residential population density and modeling potential build-out scenarios for impact fee calculations

Innovative
GIS Solutions using the
GeoCity model

Geo-Myths

GeoMyth 1: GIS is just good for making maps

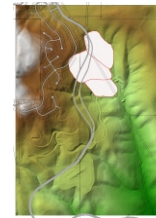
GIS is not just about making maps; it's about providing a platform for accessing information - and more information means better decision-making.



Realistic 3-D modeling of potential new development impacts for Planning Commission



Mobile GIS for Police, EMS, Code Enforcement and Public Works



Geologic Hazards Identification

GeoMyth 2: Our city is too small to benefit from GIS

Many cities have experienced unprecedented growth in recent years and the trend is to increase in the future. GIS can be an invaluable tool in managing this growth.

Every city needs some level of mapping support to operate efficiently, but the beauty of GIS is that it can be tailored to fit the need of any city, large or small.

- ⊗ Community Development
- ⊗ Tax Base Balance
- ⊗ GASB 34
- ⊗ Crime
- ⊗ Suburban Sprawl
- ⊗ Economic Development
- ⊗ Open Space
- ⊗ Traffic

GeoMyth 3: We need a staff person to operate the GIS, and it's too expensive

- ⊗ You don't need someone in-house to 'do' GIS if the initial system is well-planned. GIS should be a tool that everyone can use to access information and be more productive in their jobs.
- ⊗ Your staff shouldn't have to be concerned with building and maintaining the data.
- ⊗ It costs money to implement a GIS, but when compared with the costs of not having a GIS is quickly becomes apparent the GIS can pay for itself as a result of the increased efficiencies it produces.



11989 SOUTH HIDDEN VALLEY ROAD
SANDY UTAH 84092.5908

801.553.6421 | MOBILE 801.809.1083
PETE@SHABESTARI.COM

About Us

Pete Shabestari has been helping clients increase efficiency and save money through the use of GIS and the GeoCity model since 1995. Based in Sandy, Utah, clients include local municipalities and mining industry firms. Our unique background, training and skill set will allow you to implement your own GIS solution with unprecedented precision and savings. Call today for your free evaluation.

Copyright©2005, All Rights Reserved, Pete Shabestari

GeoCity

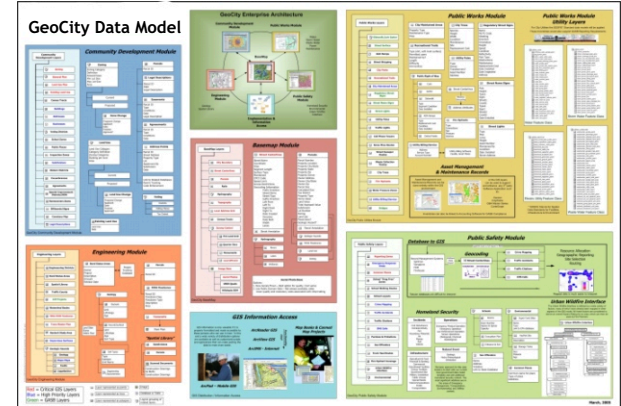
What is the GeoCity Model?

GeoCity represents an innovative approach to GIS design services - no other service provider offers this.

It is a results-oriented and proactive approach to maximizing the benefits of GIS.

The model represents extensive research and knowledge into City GIS and provides a template for GIS needs that apply to any city!

So how does it work?



Having this model means that the time spent on user needs assessment is great reduced, which also means:

- ⊗ Our GIS will cost you less
- ⊗ Our GIS will be implemented quicker
- ⊗ So instead of us spending time and money trying to determine what you need, we are saying that we already know what you need and how to do it, now you tell us what you want!

The GeoCity model is also unique in that it breaks the GIS into logical groupings (modules) based on City Department

